

REGOLAZIONE MASSE LAMELLARI / LAMELLAR WEIGHT ADJUSTMENTS

N _T	N _R	N _F	POSIZIONE / SETTING									
			MAX	99%	94%	87%	77%	64%	50%	35%	18%	0
4	2	2	MAX	99%	94%	87%	77%	64%	50%	35%	18%	0
6	3	3	MAX	99%	94%	87%	77%	64%	50%	35%	18%	0
8	4	4	MAX	99%	94%	87%	77%	64%	50%	35%	18%	0
3	1	2	MAX	99%	95%	88%	80%	69%	58%	47%	37%	33%
5	2	3	MAX	99%	94%	87%	78%	66%	53%	39%	26%	20%
7	3	4	MAX	99%	94%	87%	78%	66%	52%	37%	23%	14%
8*	3*	5*	MAX	99%	94%	87%	77%	65%	50%	35%	19%	7%
9	4	5	MAX	98%	94%	87%	78%	66%	52%	36%	21%	11%

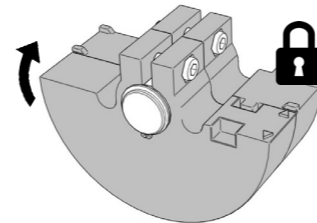
LEGENDA / LEGEND

N_T = numero totale di masse (per lato) / *total number of weights (each side)*

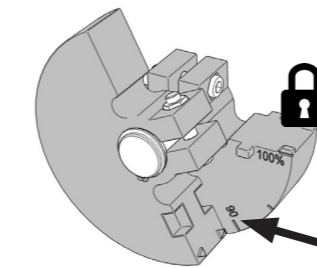
N_R = numero di masse regolabili / *number of adjustable weights*

N_F = numero di masse fisse / *number of fixed weights*

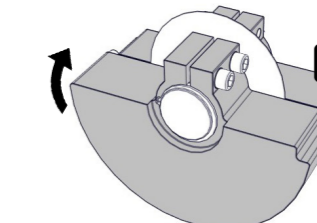
* = solo per modello 960N, 1500rpm, 50Hz / *only for type 960N, 1500rpm, 50Hz*

REGOLAZIONE MASSE PINZATE / CLAMPED WEIGHT ADJUSTMENTS

**SENZA DISCO DI REGOLAZIONE
WITHOUT ADJUSTMENT DISC**

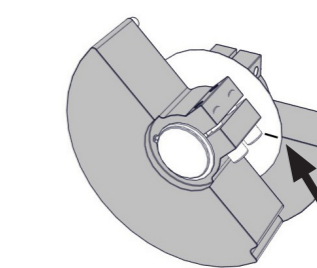
Per regolare la forza centrifuga ruotare la massa regolabile (esterna) fino a che la freccina sulla massa regolabile indica la percentuale richiesta



To adjust centrifugal force rotate the adjustable weight (external) to reach the required percentage as indicated by the small arrow on the adjustable weight


**CON DISCO DI REGOLAZIONE
WITH ADJUSTMENT DISC**

Per regolare la forza centrifuga ruotare la massa regolabile (esterna) fino a che la percentuale richiesta compare come nella figura sotto a sinistra



To adjust centrifugal force rotate the adjustable weight (external) to reach the required percentage as it appears in the illustration on the left